



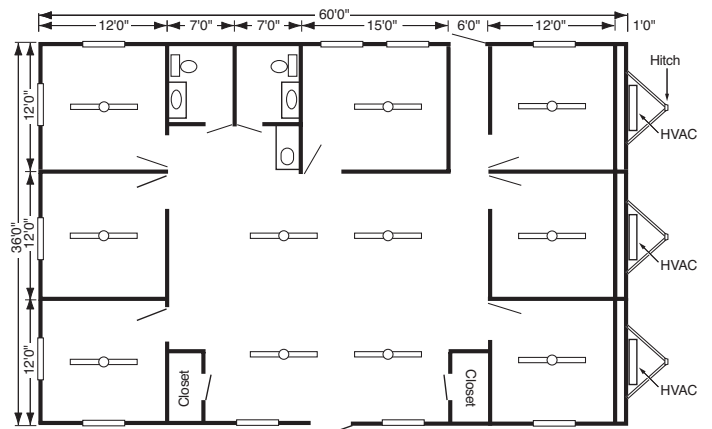
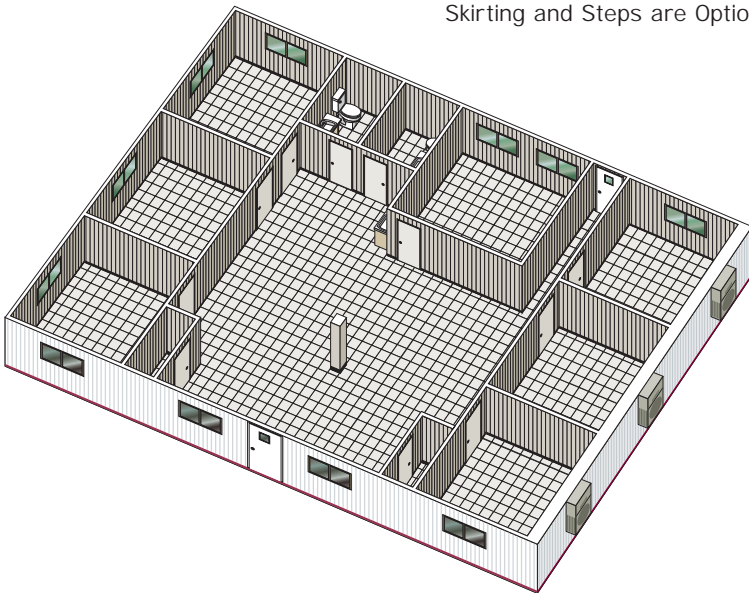
"The Value Leader in Temporary Space"™

Model 3664



.019 Aluminum Siding
Block Tile Flooring

Central HVAC
Building Size: 36'x60'
Skirting and Steps are Options



Floor plans may vary based on location.
Shown with 2 restrooms.

800-251-1600
www.actonmobile.com

Offices in PA (2), VA (2), NC (2), GA, FL (3), AL (2), TN, KY, IL, TX (3), OK, SC